



1955





# THE MEMORIES



## BRASHEAR SCHOOL

SPONSORED BY MUSIC FURNITURE EXCHANGE



# Dedication





*Parents Attending PTA*

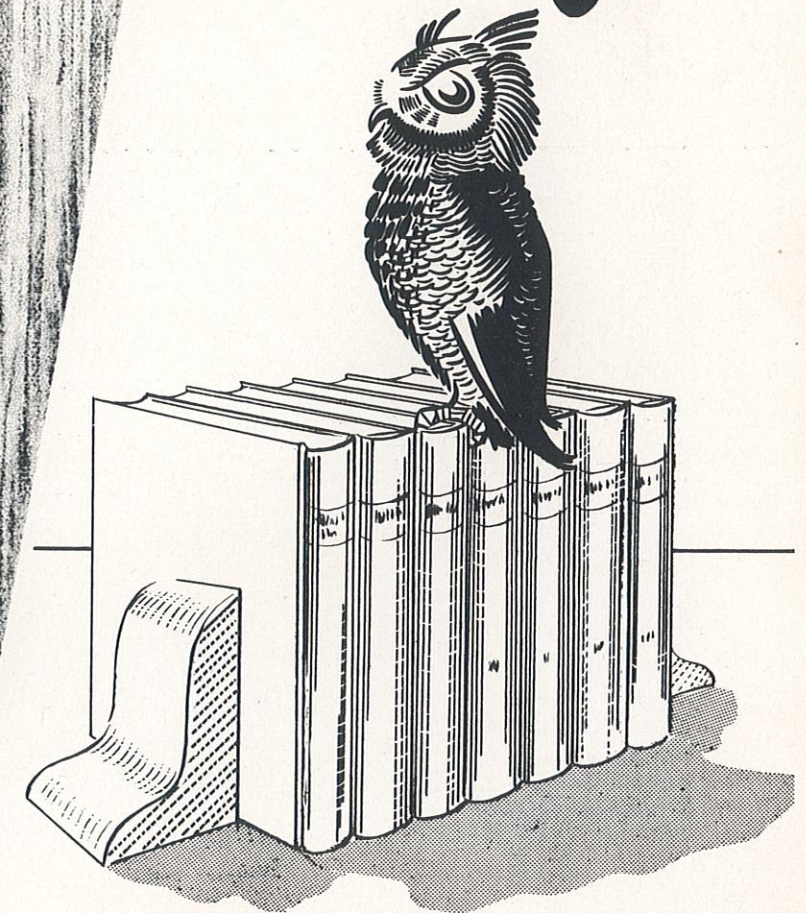


**DEDICATION**

We, the Memories staff of the 1955 year book, dedicate our annual to our parents who have so willingly helped us in gaining our education.

SPONSORED BY MILLER & SON

*Faculty*





MR. RENE D. HUNT

Superintendent  
Bachelor of Science Degree K.S.T.C.  
Masters of Arts Degree K.S.T.C.  
Science  
Algebra  
Student Council Sponsor



## STUDENT COUNCIL



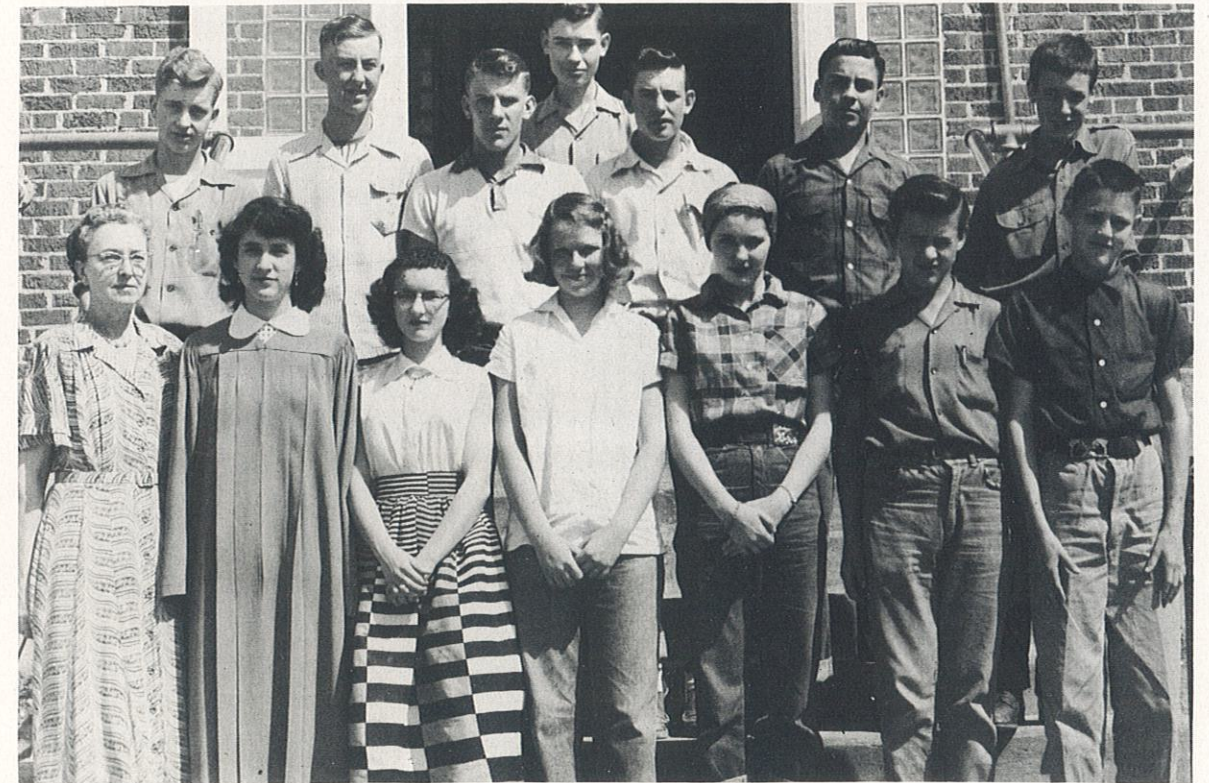
COURTESY OF MISSOURI POWER AND LIGHT

MISS HAZEL GEHRKE

Bachelor of Science Degree K.S.T.C.  
Social Studies  
Art  
Around the World Club Sponsor  
Freshman Class Sponsor



## Around The World Club



SPONSORED BY M.F.A. GROCERY



MRS. BEATA PATTERSON

Bachelor of Science Degree K. S. T. C.  
Commerce  
Mathematics  
Booster Club Sponsor  
Senior Class Sponsor



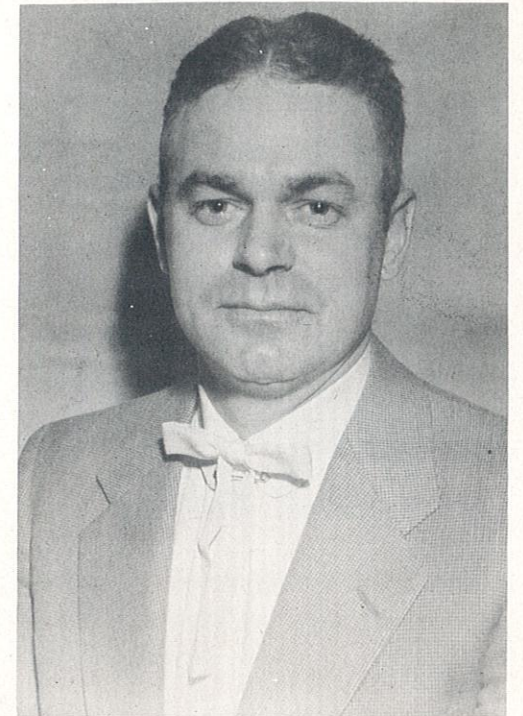
### *The Yearbook and School Paper Staff*



COURTESY OF BEARDS

MR. JESSE SHAHAN

Bachelor of Science Degree K. S. T. C.  
Industrial Arts  
Driver Education  
Photo Club Sponsor  
Sophomore Class Sponsor



### *Photo Club*

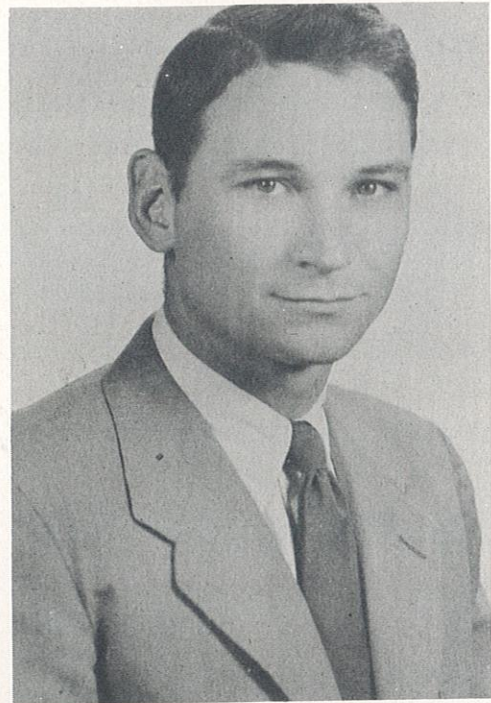


SPONSORED BY COOK'S PAINTS



MR. JOHN ROSS

English  
K. S. T. C. Student  
High School Coach  
Junior High School Coach  
Junior Class Sponsor  
Dramatic Club Sponsor



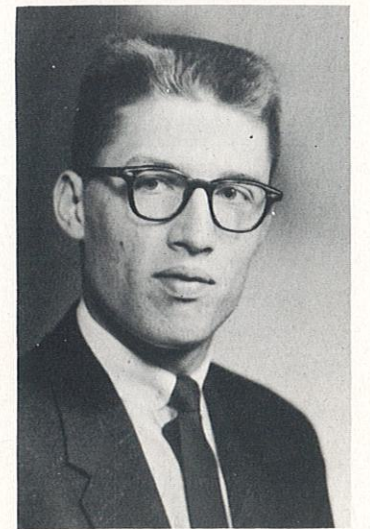
### *Dramatic Club*



COURTESY OF LEO'S ROLLER RINK

KEITH STOUT

Bachelor of Science 1955  
Northeast Missouri State  
Teachers College  
Music Club Sponsor  
Glee Club  
Band Director



### *Music Club*



COURTESY OF CHADWELL OIL COMPANY

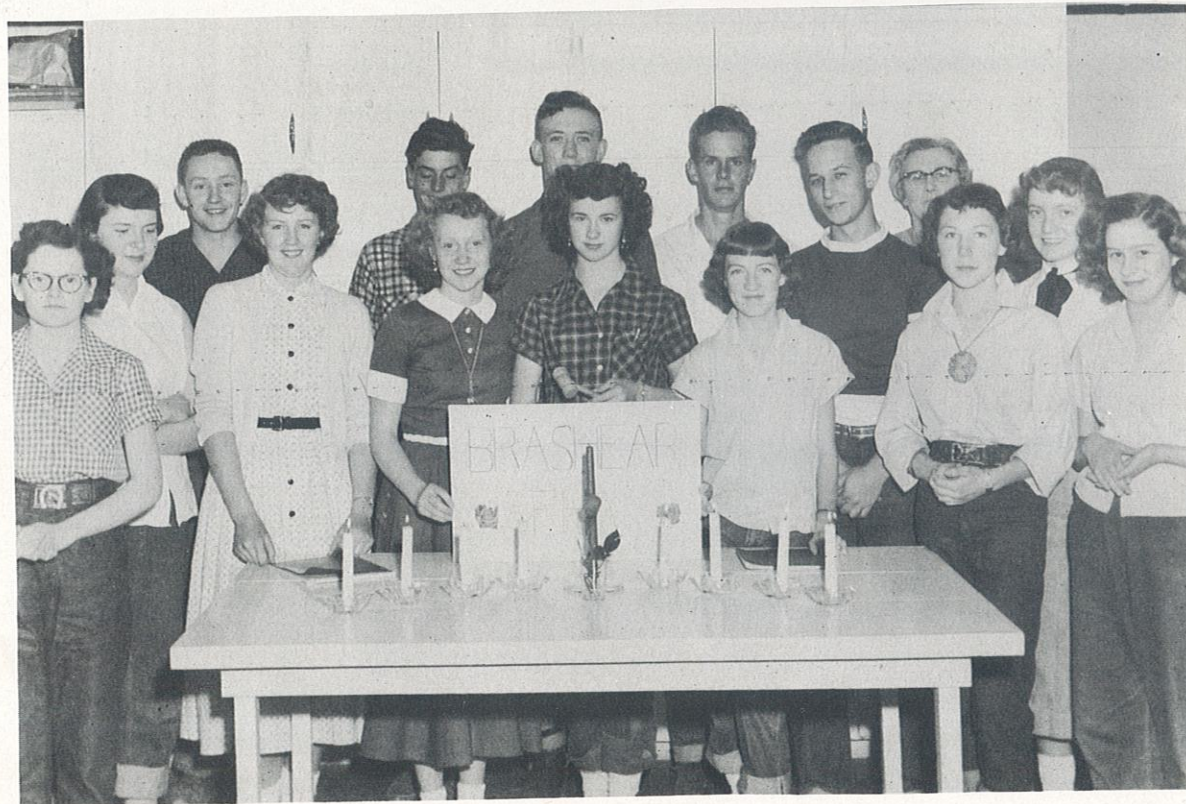


MISS STELLA OLIVER

D. O. Degree  
Bachelor of Science Degree K. S. T. C.  
Home Economics  
F. H. A. Sponsor



*Future Homemakers of America*



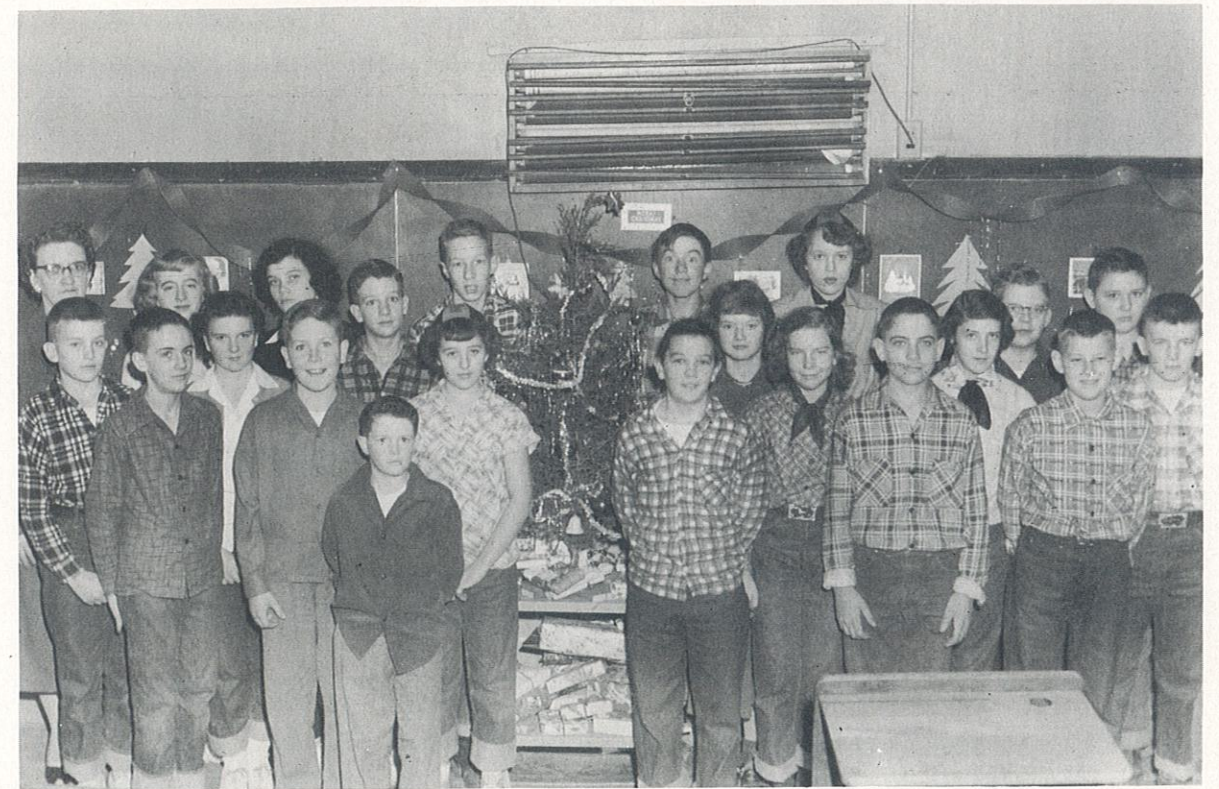
COURTESY OF GARDNER GROCERY & CAFE

MRS. ORA HUNT

Bachelor of Science Degree K. S. T. C.  
Elementary  
Literature



*Seventh and Eighth Grades*



COURTESY OF KROGERS



MRS. NEVA SLEETH

Bachelor of Science Degree K. S. T. C.  
Intermediate



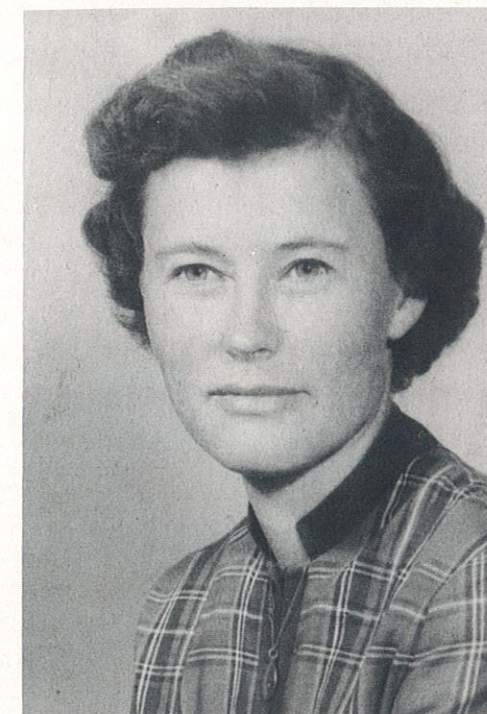
*Fourth, Fifth and Sixth Grades*



COURTESY OF TRAVERS FURNITURE COMPANY

MRS. NELLIE McCOY

Bachelor of Science Degree K. S. T. C.  
Primary



*First, Second and Third Grades*



SPONSORED BY JOHN GIOVANNINI





GLENN SCOTT  
Custodian



**Bus Drivers**

Jesse Shahan, Wayne McGrath, Henry Pearce, and Daniel Howard

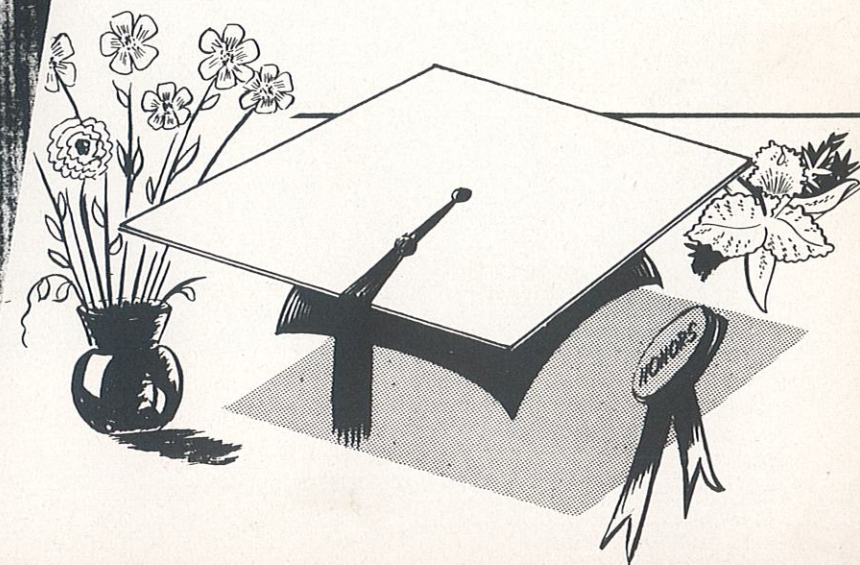


**SCHOOL BOARD**

Messrs. Henry, Morehead, Milstead, Patterson, Hammontree, Walters, Barker

SPONSORED BY PRARIE FARMS

# Seniors





VALEDICTORIAN



SALUTATORIAN

**Honor Students**

Johnette Pack and Nancy Mozingo



1955 Seniors of B.H.S.

BANK OF KIRKSVILLE MEMBER FEDERAL DEPOSIT INSURANCE CORPORATION

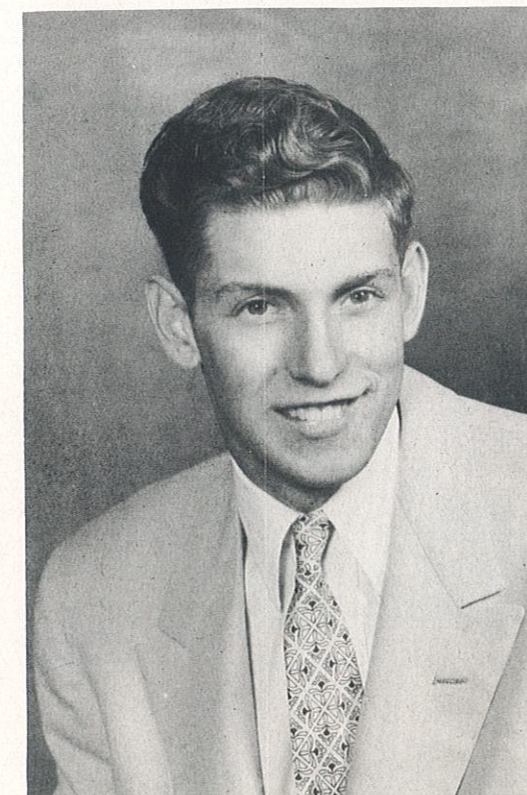


JOHNETTE PACK

- Basketball . . . . . 1,2,3,4
- Softball. . . . . 1,2,3,4
- Glee Club. . . . . 3
- Class Offices . . . . . 1,2,4
- Contest Work. . . . . 3
- Student Council. . . . . 3
- Play. . . . . 3,4
- Pilgrimage Trip. . . . . 2
- Music Club. . . . . 4
- F.H.A. . . . . 2
- Queen Candidate. . . . . 4
- School Paper & Yearbook. . . . 3,4

LYLE BUCKALLEW

- Basketball . . . . . 1,2
- Softball. . . . . 1,3,4
- Track. . . . . 1
- Class Offices . . . . . 4
- Student Council. . . . . 2,3
- Play. . . . . 3,4
- Glee Club. . . . . 1,2,3,4
- Contest Work. . . . . 1,2,3,4
- Booster Club. . . . . 4



BEST WISHES OF BRASHEAR GROCERY





NANCY MOZINGO

- Basketball . . . . . 1, 2, 3, 4
- Softball . . . . . 1, 2, 3, 4
- Track . . . . . 1, 2
- Glee Club . . . . . 2
- Band . . . . . 1, 2, 3, 4
- Contest Work . . . . . 1, 2, 3, 4
- Music Club . . . . . 4
- Art Club . . . . . 3
- Student Council . . . . . 2
- Play . . . . . 3, 4
- School Paper & Yearbook . . . . . 4
- Class Offices . . . . . 3, 4

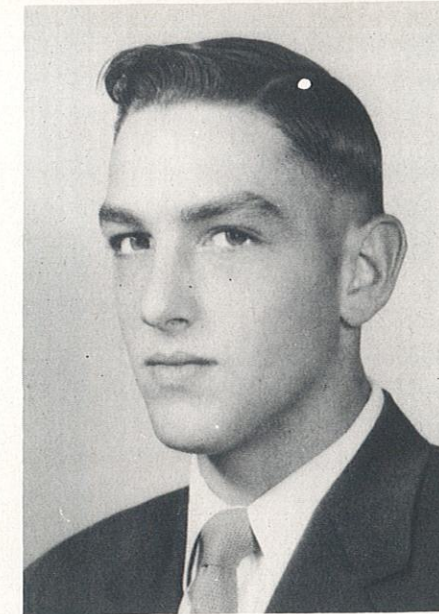


NAOMI REEVES

- Basketball . . . . . 1, 2, 3, 4
- Softball . . . . . 1, 2, 3, 4
- Track . . . . . 1, 2
- Glee Club . . . . . 2, 4
- Contest Work . . . . . 2, 4
- Play . . . . . 3, 4
- Dramatic Club . . . . . 4
- Commercial Club . . . . . 3
- School Paper & Yearbook . . . . . 4
- Class Offices . . . . . 1, 2, 3, 4
- F. H. A. . . . . 2

COMPLIMENTS OF RUBY GREEN

**STUDENT**



ROGER ELMORE

- Basketball . . . . . 1, 2, 3, 4
- Softball . . . . . 1, 2
- Glee Club . . . . . 1, 2, 4
- Camera Club . . . . . 3
- Play . . . . . 3, 4
- Student Council President . . . . . 4

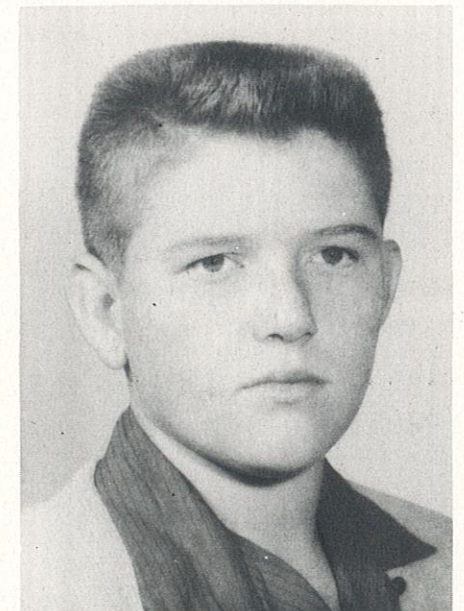


**COUNCIL**



LETITIA HARTSOCK

- Basketball . . . . . 1, 2, 3, 4
- Softball . . . . . 1, 2, 3, 4
- Glee Club . . . . . 4
- Band . . . . . 1, 2, 3, 4
- Contest Work . . . . . 1, 2, 3, 4
- Play . . . . . 3, 4
- Schoolpaper & Yearbook . . . . . 4
- Photo Club . . . . . 3

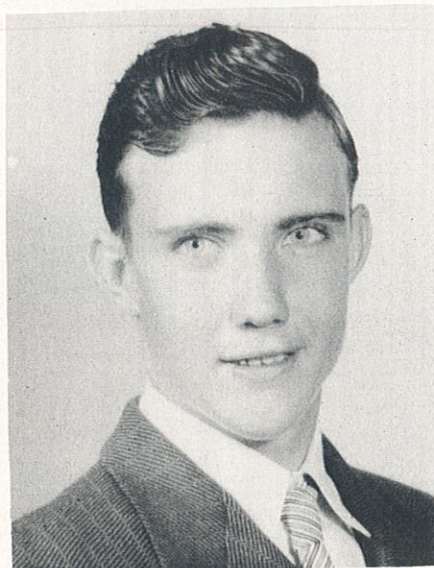


RONNIE TAYLOR

- Glee Club . . . . . 1
- Band . . . . . 1
- Student Council . . . . . 4
- Photo Club . . . . . 3
- Play . . . . . 3, 4
- Class Office . . . . . 3

BEST WISHES OF J. A. JOHNSON





RICHARD COY

Basketball . . . . . 1,2,3,4  
 Softball . . . . . 1,2,3,4  
 Camera Club . . . . . 3,4  
 Play . . . . . 4  
 Glee Club . . . . . 1,2,3,4  
 Contest Work . . . . . 3,4



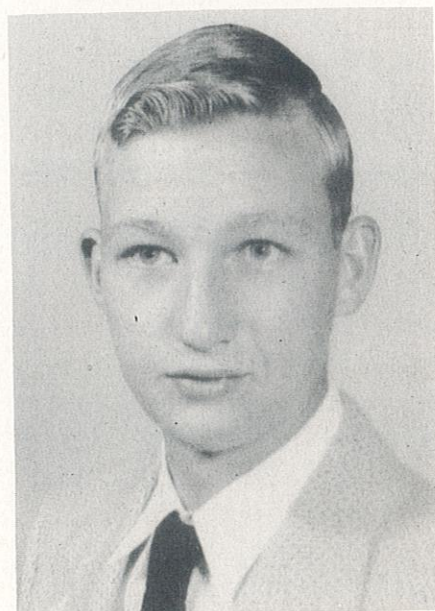
JUDY KITE

Basketball . . . . . 1,2,3  
 Play . . . . . 3,4  
 Photo Club . . . . . 3  
 Around the World Club . . . . . 4  
 F.H.A. . . . . 1  
 Class Offices . . . . . 3,4  
 Schoolpaper & Yearbook . . . . . 3,4



JOANNE LANG

Basketball . . . . . 1,2,3,4  
 Softball . . . . . 1,2,3,4  
 Band . . . . . 1,2,3,4  
 Glee Club . . . . . 2  
 Contest Work . . . . . 1,2,3,4  
 Schoolpaper & Yearbook . . . . . 4  
 Student Council . . . . . 3  
 Music Club . . . . . 4  
 Play . . . . . 3,4



LARRY BENGE

Basketball . . . . . 1,2,3,4  
 Softball . . . . . 1,2,3,4  
 Track . . . . . 1,2  
 Camera Club . . . . . 3,4  
 Play . . . . . 4



LOIS PHILLIPS

Basketball . . . . . 1,2,3,4  
 Softball . . . . . 1,2,3,4  
 Track . . . . . 1,2  
 Band . . . . . 1,2,3,4  
 Glee Club . . . . . 1,2,4  
 Contest Work . . . . . 1,2,3,4  
 Play . . . . . 3,4  
 Schoolpaper & Yearbook . . . . . 4  
 Dramatic Club . . . . . 3,4



SHIRLEY MAY

Glee Club . . . . . 2,3,4  
 Contest Work . . . . . 2,3,4  
 Student Council . . . . . 1  
 Play . . . . . 3,4  
 Art Club . . . . . 3



JANICE COOLEY

Band . . . . . 1,2,3,4  
 Glee Club . . . . . 2,3,4  
 Contest Work . . . . . 1,2,3,4  
 Basketball . . . . . 1  
 Around The World Club . . . . . 4  
 Commercial Club . . . . . 3  
 Schoolpaper & Yearbook . . . . . 4  
 F.H.A. . . . . 2  
 Play . . . . . 3,4



ROBERT O'DONNELL

Basketball . . . . . 3,4  
 Glee Club . . . . . 2,4  
 Camera Club . . . . . 3,4  
 Play . . . . . 4

COMPLIMENTS OF BARKER'S GARAGE

Best Wishes of NATIONAL BANK, Member Federal Deposit Insurance Corporation





DOUGLAS RUMMERFIELD

- Play . . . . . 4
- Glee Club . . . . . 2
- Booster Club . . . . . 4
- Camera Club . . . . . 3



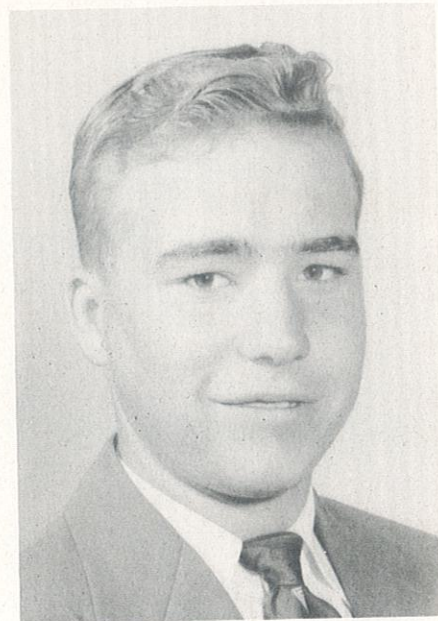
REBA SUE PLATZ

- Hurdland High School . . . . . 1,2
- Basketball . . . . . 3
- Softball . . . . . 3
- Play . . . . . 4
- Glee Club . . . . . 3
- Contest Work . . . . . 3
- Schoolpaper & Yearbook . . . . . 4



NEVA SCOTT

- Glee Club . . . . . 2
- Schoolpaper & Yearbook . . . . . 4
- Play . . . . . 4
- Booster Club . . . . . 4
- Camera Club . . . . . 3



JOE SMITH

- Basketball . . . . . 1,2,3,4
- Softball . . . . . 1,2,3,4
- Band . . . . . 1,2,3,4
- Glee Club . . . . . 1,4
- Contest Work . . . . . 1,2,3,4
- Play . . . . . 3,4
- Camera Club . . . . . 3,4

COMPLIMENTS OF POWELL SHOES

**Senior Play**

"Aaron Slick From Punkin Crick"



NIGHT CLUB ENTERTAINERS



PLAY CAST

COMPLIMENTS OF HURLY LUMBER COMPANY



# Juniors





C  
l  
a  
s  
s



Glenna Crossgrove



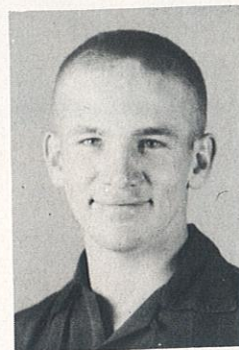
Shirlene Shouse



Marian Harbur



JoAnn O'Donnell



Billie Kellison



Cora Lee Helton



Lyle Creason

**Junior-Senior Banquet**



COMPLIMENTS OF UPDYKE MOTOR CO.

O  
f  
f  
i  
c  
e  
r  
s



Carl Moore



Gary Moyers



Richard James



Jerome Williams



Norman Shepard



Raymond James



Ona Phillips



Ronnie Pierce



Darrel Barnes



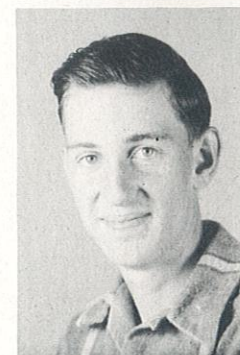
Anna Garlock



Leon Byers



Donna Crow



Earl Fast



Robert Pevehouse



Ilene Stewart



Harold Billington

COMPLIMENTS OF ANESI PACKING COMPANY



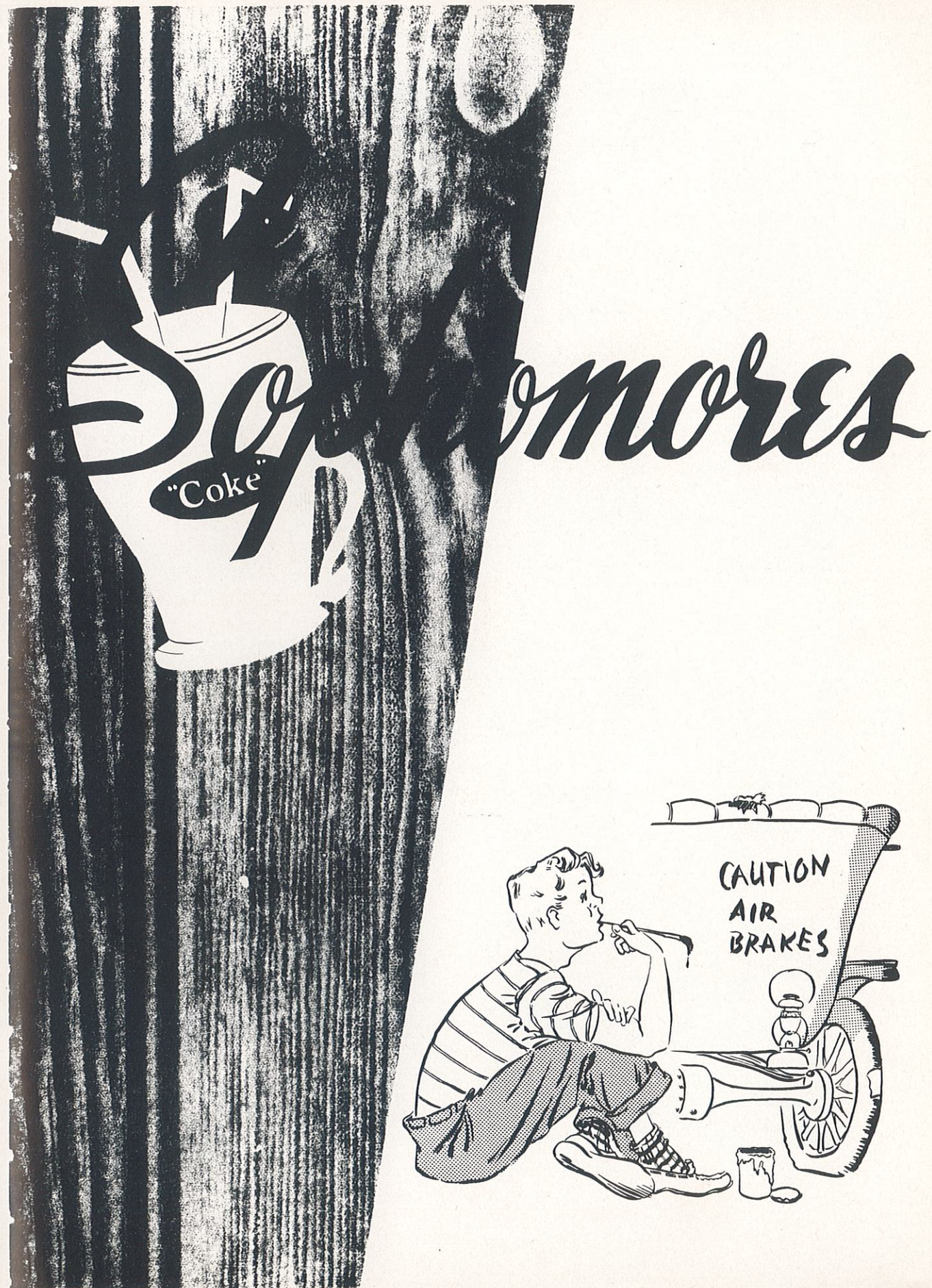


**"No Bride For the Groom"**

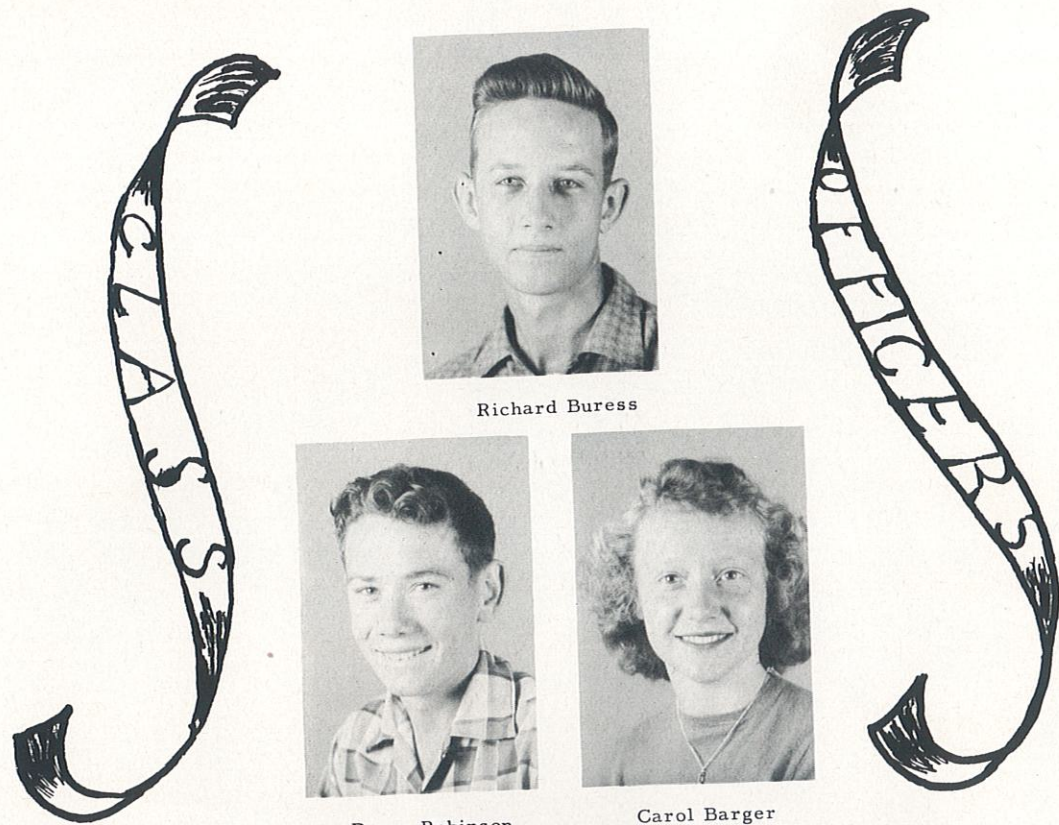
JUNIOR PLAY CAST

Ona Phillips . . . . .	Jolly
Glenna Crossgrove. . . . .	Bess Selby
JoAnn O'Donnel . . . . .	Prissy Paluna
Cora Helton. . . . .	Libby Little
Robert Pevehouse. . . . .	Boots
Gary Moyers. . . . .	Digby Prindel
Anna Garlock. . . . .	Belinda Groot
Marian Harbur. . . . .	Sophia Selby
Ilene Stewart. . . . .	Salamandy
Lyle Creason. . . . .	Herbert Prindel
Bill Kellison. . . . .	Tom Swanton
Shirlene Shouse. . . . .	JDot Claiborne

COURTESY OF HIGHTOWER CANDY SERVICE







Richard Buress



Duane Robinson



Carol Barger



Charlene Lipper



Carol Gregg



Richard Hughes



Vergie Truitt



Russel Bohanan



Gerald Barnes



Jerry Bryn

COMPLIMENTS OF WHITE CABIN  
32



Alice Thompson



Nancy Bunch



Rosalie Fox



Ferl Elsea



Rosemary Swearingen



Treva Helton



Marie Harbur



Lou Sheets



Donna Miller



Frank Crabtree



Frances Rummerfield



Martha Hartsock

SPONSORED BY GEORGE DOUGLAS  
33





Philip Sorenson



Winona Cook



Harold Reeves



Jimmie Stribling



Paul Spain



Jimmy Stanek



Gerald Gudehus



Elnora Phillips



Gary Schrage



Dean Mauck



Harold Shahan



Lonnie Osborn

COMPLIMENTS OF THOMPSON MARKET



# Freshmen

*Bill*  
*Gene*  
*Joe*  
*"Bubs"*  
*Sam*  
*"Stan"*  
*Mike*  
*Sue*  
*Susan*  
*Jim*





C  
l  
a  
s  
s



Kathleen Stanek



Edith Newcomer



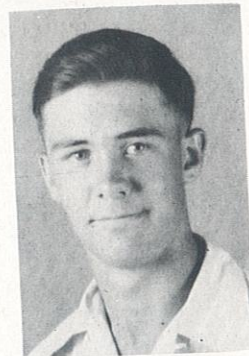
Camille Murfin



Mary Kellison



Betty Meline



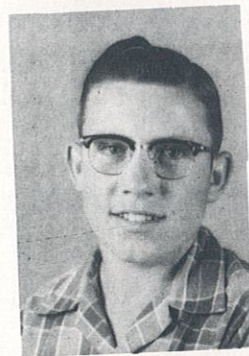
Martin Lancaster



Shirley Platz



Virginia Gardner



Orval Wood



Judith Slocum



Carol Barnes



Katheryn Scott



Morna Robinson



Charles Matlick



Patsy Kellison

O  
f  
f  
i  
c  
e  
r  
s



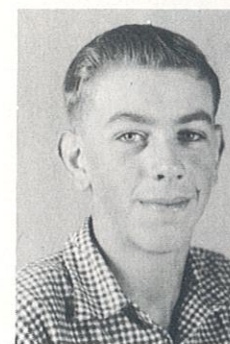
Karen Bunch



John Walters



Carolyn Elsea



Larry Crim



Sherry Scott



Evelyn Cowell



Shirley Gould



Donna Young



Mary Smith



Paul Pearce



Donna Elsea



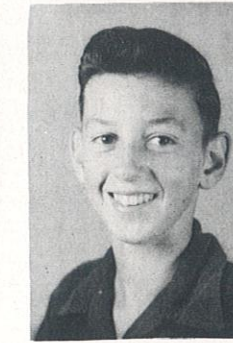
Beverly Pinkerton



Charles Reeves



Roberta Farley



Monte Milstead

COMPLIMENTS OF EASLEY FUNERAL HOME

COMPLIMENTS OF KIRKSVILLE RADIO and ELECTRIC



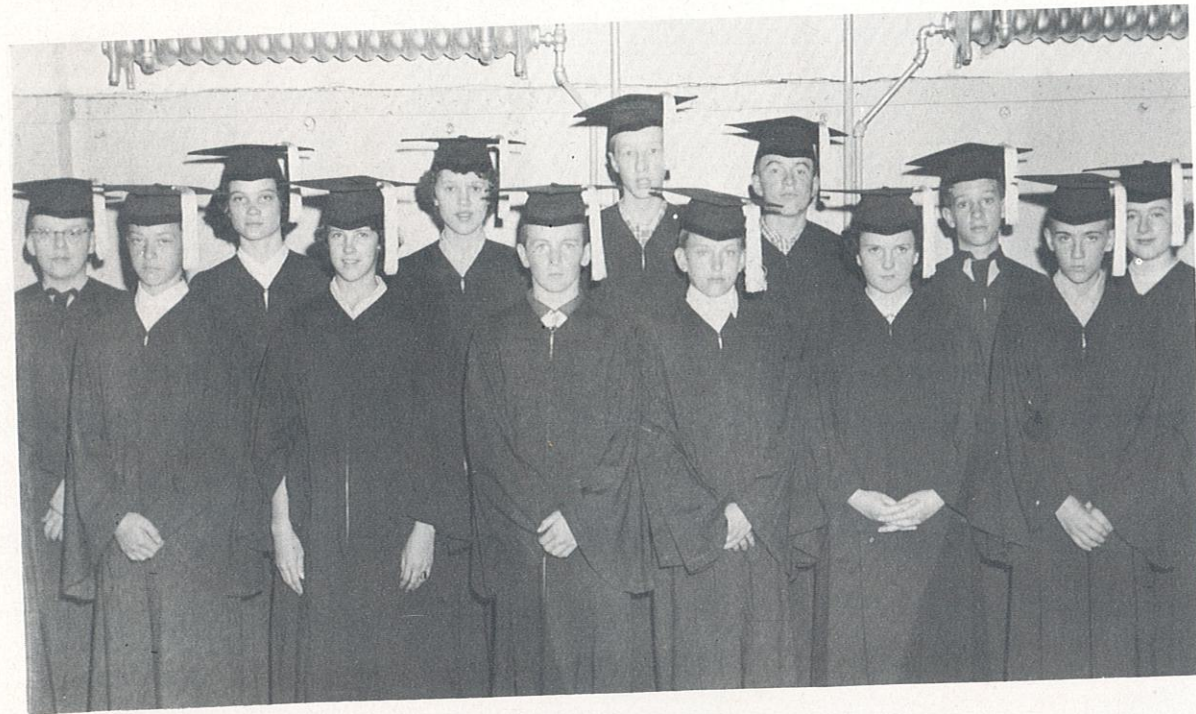


ANNOUNCING

# Brides







EIGHTH GRADE GRADUATES



PTA PROGRAM, "WEDDING OF THE PAINTED DOLL"

COMPLIMENTS OF COCO-COLA



Blanche Hayden



Jimmie Bleything



Joyce Dunn



Allen Ornes



Bertha Reeves



Jacky Kite



Betty Perry



Larry Harbur



David Taylor



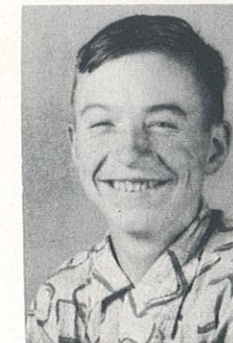
Donna Ross



Gary Ridge



Caryle Sorenson



Cletus Swearingen

EIGHTH GRADE



SEVENTH GRADE



David Gudehus



Patsy Sees

COMPLIMENTS OF MO. MIDLAND GAS COMPANY





Bob Horton



Mary Kelly



Gary Petree



Zelda Page



Gerald Cowell



Garles Scott



Morris Salter



Gary Page



SIXTH GRADE



Ricky Spiker



Betty Crandall



Dale Hammontree



Sandra Milstead



Arnie Harmon



Gale Hammontree



Donnie Patterson

\* COURTESY OF MILLER FORD SALES



Terry Ross



FIFTH GRADE



Judy Barker



Marvin Ornes



Dorothy Callahan



Dale Crossgrove



Janet Johnson



Tommy Story



Claudette Taylor



Gene Gudehus



Janet Sellers



Bill White



FOURTH GRADE



Dianna Kite



Bobby Hartsok



Barbara Rehm

BEST WISHES OF G.M.C. TRUCK SERVICE





Waunita Salter



Mike Leeper



Donna Milstead



Bobby Thompson



Judy Gardner



Lonnie Patterson



THIRD GRADE



Jane Ann Gudehus



Jill Zook



Lyn Creason



Jill Spiker



Jean Johnson



Marilyn Mason



Raymond Pinkerton



Linda Moore



Carol Ross

COMPLIMENTS OF MARTS CUT RATE DRUG



Kitsi White



Tommie Reeves



SECOND GRADE



Cecil Robertson



Sally Reeves



Ronnie Osborn



Terry Callahan



Gene Crandall



Harold Ornes



Jean Zook



Raymond Salters



Rickey Taylor



Larry Darnel



Jimmie Williams



COMPLIMENTS OF J. V. HANKS





FIRST GRADE



Richard Patterson



Patsy Gardner



Duane Patterson



Joyce Salters



Micheal Shahan



Janey Petree



Paul Sellers



Jo Sees



Robert White



Benny Morehead



Dane Zook



George Callahan

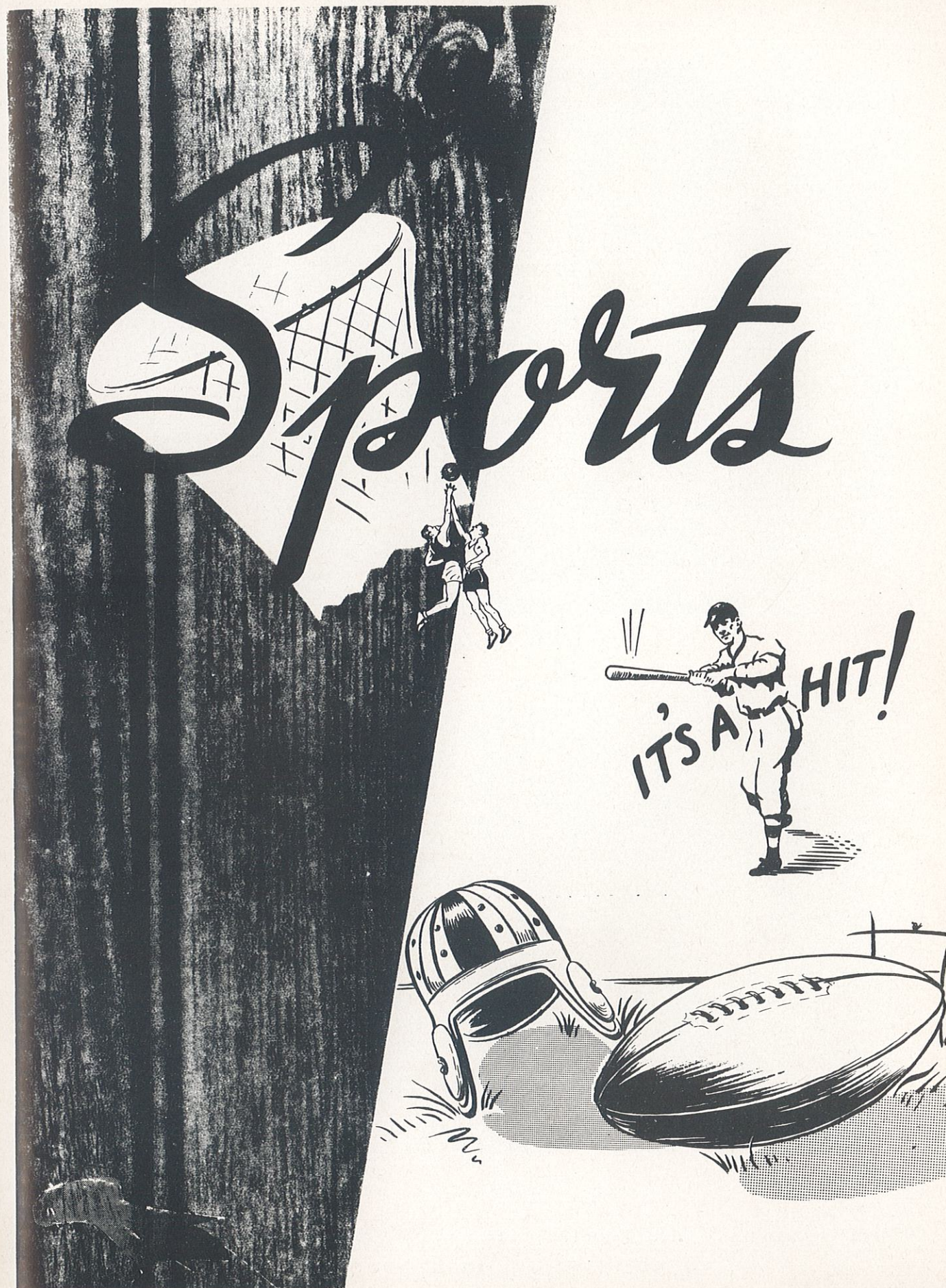


Karen Johnson



Raymond Rehm

COMPLIMENTS OF SMITH TRACTOR AND IMPLEMENT COMPANY

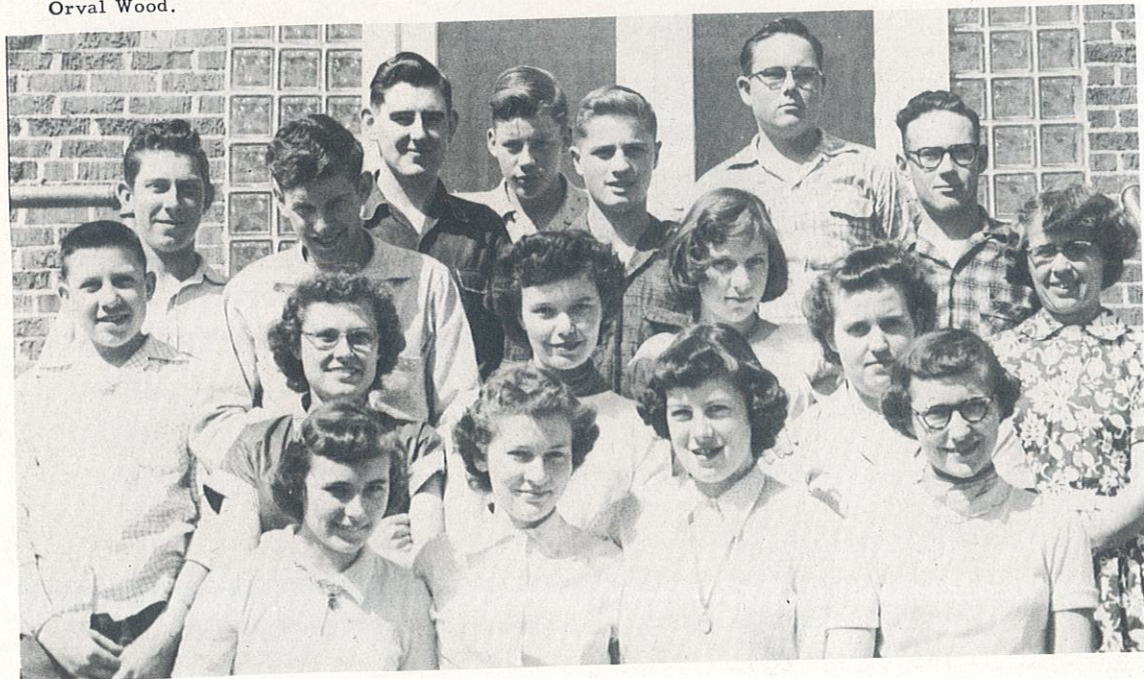






### Cheerleaders

Jimmy Stanek, Kathy Stanek, Mary Jane Kellison, Camille Murfin, Katheryn Scott, Treva Helton and Orval Wood.



THE PEP SQUAD

SPONSORED BY DOC. HAGGARD AND SON

## High School Softball Squads

Mr. Jack Ross, Coach



FRONT ROW: Gerald Barnes, Robert Pevehouse, Bill Kellison, Dick Hughes, Ferl Elsea, Gary Schrage, Paul Spain and Darrell Barnes.  
BACK ROW: Dean Mauck, Lyle Creason, Harold Shahan, Jerry Gudehus, Larry Benge, Richard Coy and Duane Robinson.



FRONT ROW: Letitia Hartsock, Donna Miller, Lois Phillips, Joanne Lang and Nancy Mazingo.  
BACK ROW: Joanne O'Donnell, Johnette Pack, Glenna Crossgrove, Charlene Lipper, Nancy Bunch, Shirlene Shouse, Cora Helton and Ona Phillips.

COMPLIMENTS OF BULLDOG INN



## Junior High Softball Squads

Mr. Jack Ross, Coach



FIRST ROW: Bertha Reeves, Karen Bunch, Kathleen Stanek, Joyce Dunn, Donna Ross and Camille Murfin.  
 SECOND ROW: Zelda Page, Blanche Hayden, Donna Elsea, Evelyn Cowell, Mae Newcomer and Carolyn Elsea.  
 THIRD ROW: Shirley Platz, Coach Ross, Jean Perry, Donna Young, Patsy Kellison and Patsy Sees.



FRONT ROW: Gary Page, Monte Milstead, Gerald Cowell, David Gudehus, Caryle Sorenson and Johnny Harbur.  
 BACK ROW: Gary Ridge, Charles Matlick, Larry Crim, Johnny Walters, Martin Lancaster and Orval Wood.

COURTESY OF REX MELINE

## Senior High Basketball Squads

Mr. Jack Ross, Coach



FRONT ROW: Joanne Lang, Letitia Hartsock, Naomi Reeves, Shirlene Shouse, Nancy Mozingo, Lois Phillips and Johnette Pack.  
 BACK ROW: Martha Hartsock, Charlene Lipper, Glenna Crossgrove, Nancy Bunch, Carol Gregg, Donna Miller and Ona Phillips.



FRONT ROW: Robert Peevehouse, Paul Spain, Richard Coy, Larry Bengé, Joe Smith and Llye Buckallew.  
 BACK ROW: Dean Mauck, Richard Hughes, Lyle Creason, Duane Robinson and Lou Sheets.

CITIZENS NATIONAL BANK, MEMBER FEDERAL DEPOSIT INSURANCE CORPORATION



## Junior High Basketball Squads

Mr. Jack Ross, Coach

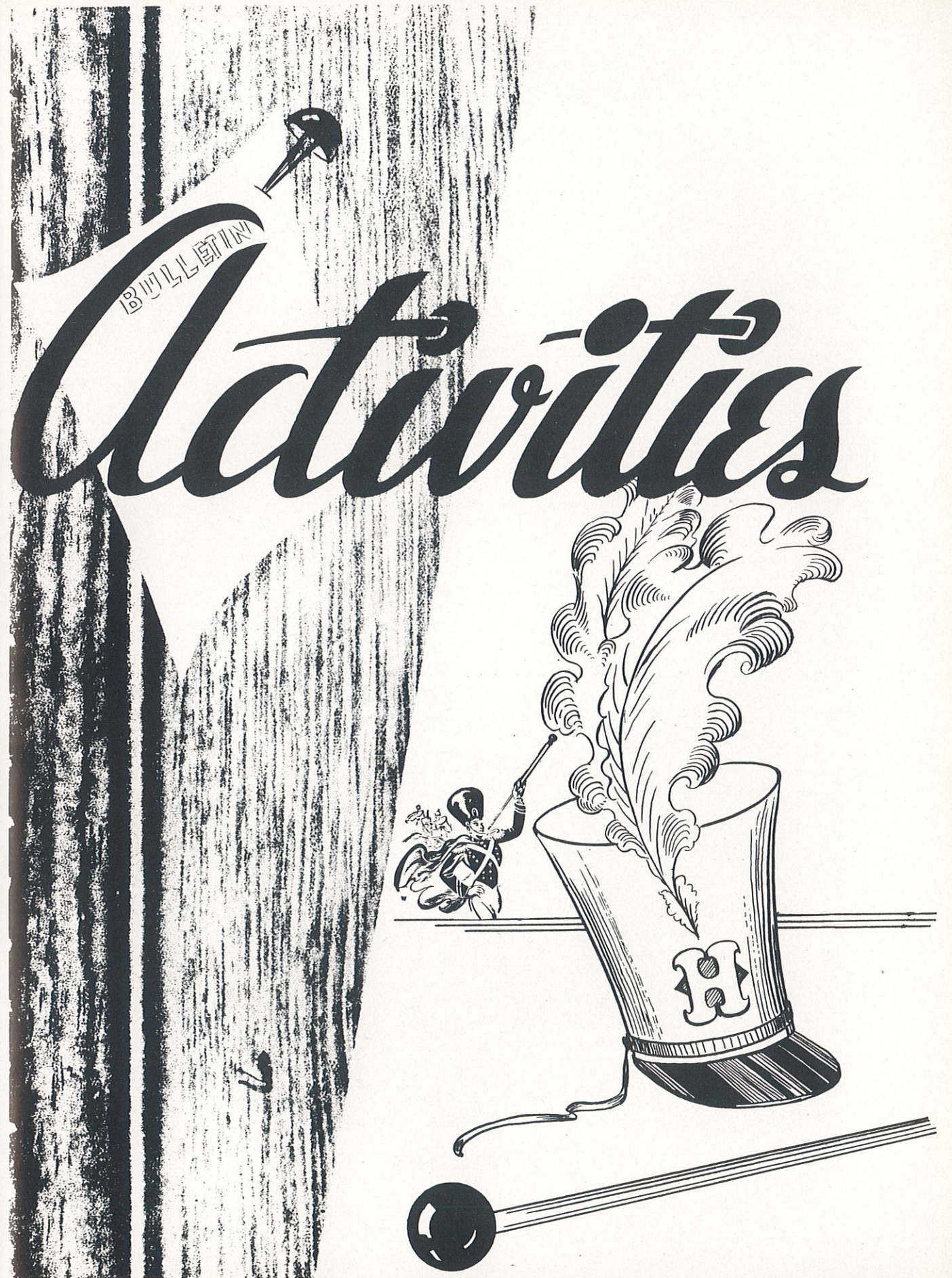


FIRST ROW: C. Elsea, M. Newcomer, B. Hayden, K. Bunch, Z. Page, and B. Reeves.  
 SECOND ROW: E. Cowell, J. Dunn, R. Farley, M. Kelley, G. Scott, C. Murfin and D. Elsea.  
 THIRD ROW: D. Ross, K. Stanek, J. Perry, S. Platz, P. Kellison, S. Scott, B. Pinkerton and B. Meline.



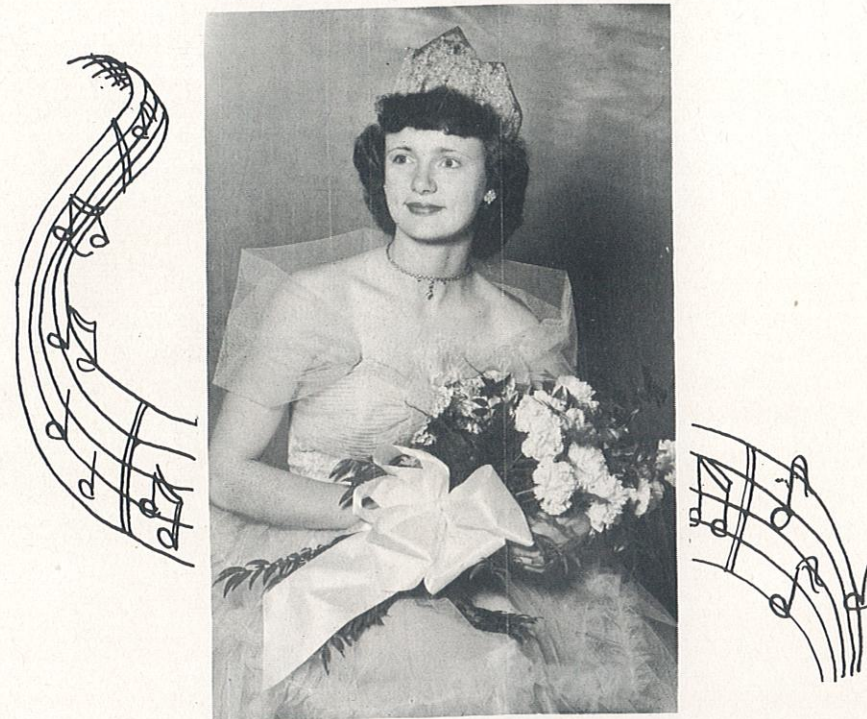
FIRST ROW: Gary Ridge, David Gudehus, David Taylor and Jacky Kite.  
 SECOND ROW: Caryle Sorenson, Morris Salter, Garry Petree, Monte Milstead and Gerald Cowell.  
 THIRD ROW: Butch Lancaster, Larry Crim, John Walters, Charles Reeves and Gary Page.

COMPLIMENTS OF F. M. STAMPER COMPANY





## Queen of Glamour



Shirlene Shouse, Yearbook Queen



## Coronation

COMPLIMENTS OF SANDERS PLUMBING AND HEATING



## BAND

Horton, Cooley, Harmon, Thompson, Hartsock, Phillips, Phillips, Harbor, Taylor, Burress, Pevehouse, Smith, Sorenson, Schrage, Stribling, Hartsock, Mozingo, Platz, Lipper, Pinkerton, Shepard, Robinson, Lang, Ross, Perry, Gardner, Johnson, Ornes, Walters, Sellers, Milstead, Crossgrove, Ridge, Sorenson, Gregg.



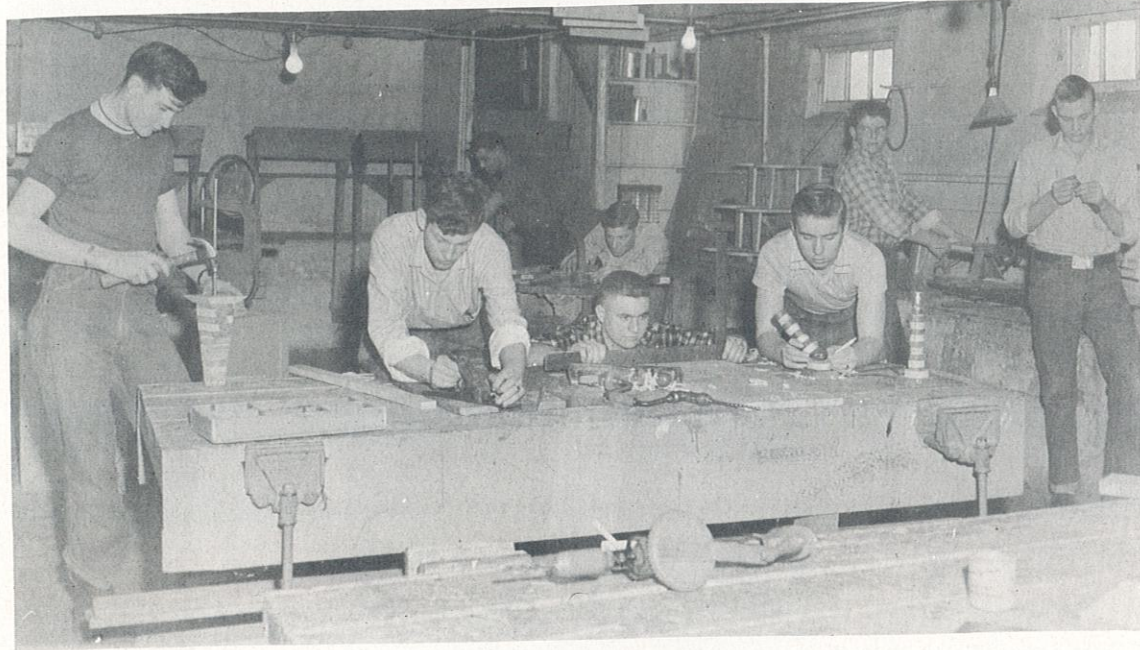
## CHORUS

Crabtree, James, Pierce, James, Coy, Buckalew, Pevehouse, Stanek, Lancaster, Wood, Pierce, O'Donnell, Matlick, Schrage, Stribling, Elmore, Phillips, Crossgrove, Kellison, Kellison, Stewart, Slocum, Gardner, Cowell, Smith, Cooley, Barger, Young, Walters, Stanek, Bunch, Hartsock, Fox, Murfin, Platz, Reeves, May, Robinson, Helton, Scott.

COURTESY OF KIRKSVILLE IMPLEMENT COMPANY



## Industrial Arts Department



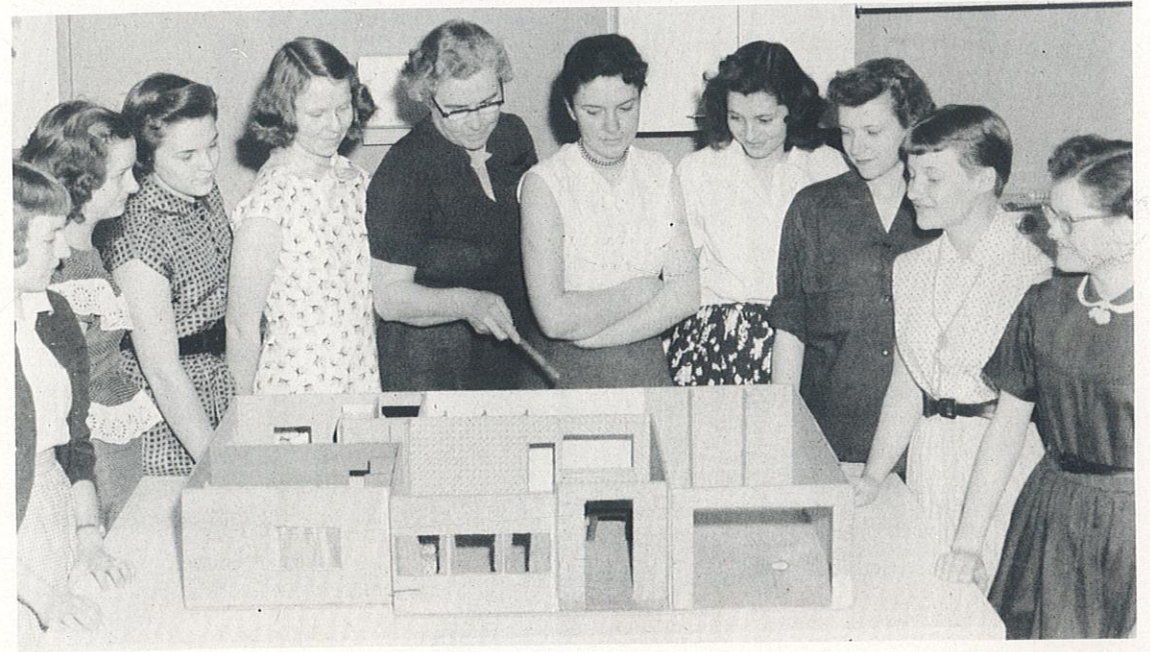
SENIOR BOYS HARD AT WORK



FRESHMEN BOYS DEMONSTRATING THEIR SKILL

BEST WISHES OF ELMER BENGE

## Home Ec. Department



DISPLAYING THEIR PLANNED HOME

## Art Class



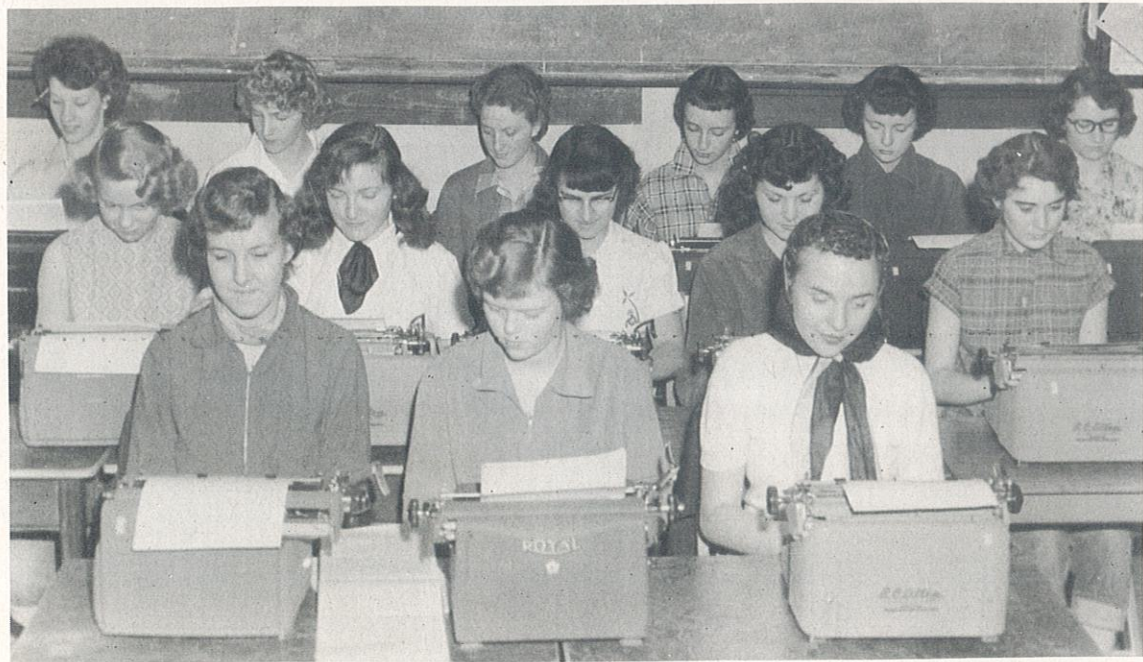
LEARNING TO KNIT

COMPLIMENTS OF BRASHEAR OIL CO.





P. T. A. OFFICERS



FIRST YEAR TYPING CLASS

SPONSORED BY SELLERS IMPLEMENT COMPANY

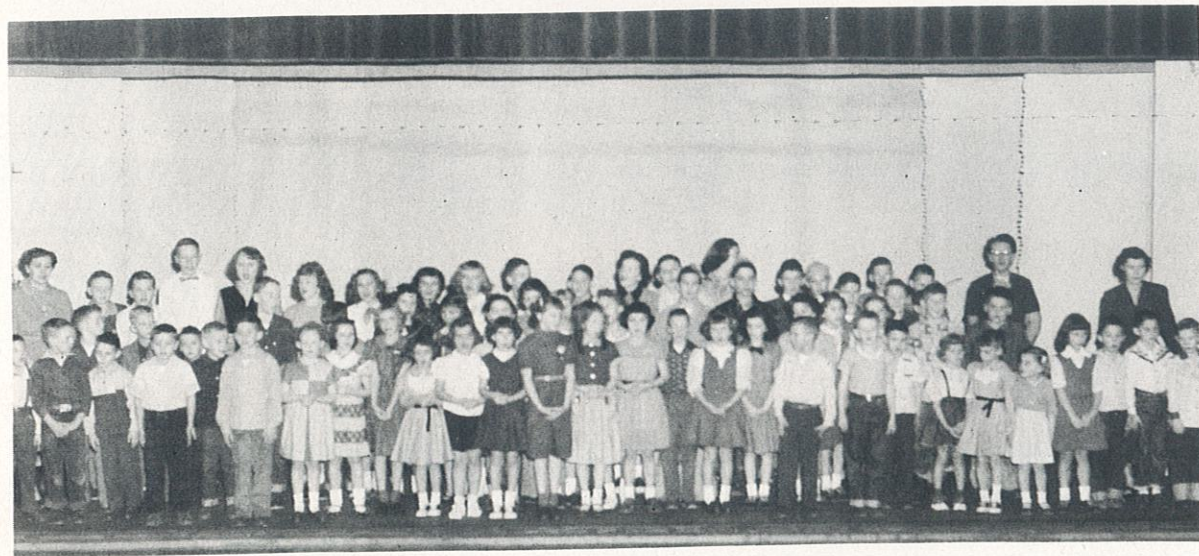






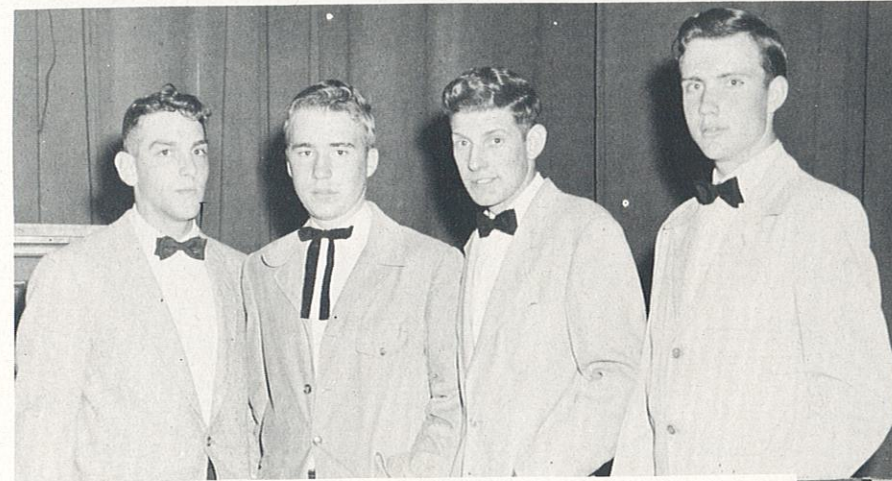
FRESHMAN COASTING PARTY

PTA CHRISTMAS PROGRAM  
"GRADES"



BEST WISHES OF ADAIR LUMBER COMPANY

## Spring Contest Contestants



BOYS QUARTETTE  
II RATING AT SPRING CONTEST  
Roger Elmore, Joe Smith, Lyle Buckallew, Richard Coy

LYLE BUCKALLEW  
SOLO--II



NAOMI REEVES  
SOLO--II



GIRLS QUARTETTE  
I RATING AT SPRING CONTEST  
Camille Murfin, Naomi Reeves, Shirley Platz, Glenna Crossgrove



TRUMPET TRIO  
"III"  
Richard Burruss, Martha Hartsock, Jimmy Stanek

COMPLIMENTS OF McCOLLUMS NEW AND USED FURNITURE





JUNIOR-SENIOR PROM



DRIVER'S TRAINING CLASS

COURTESY OF McHENRY AND GASH



COMPLIMENTS OF SYKES STUDIO